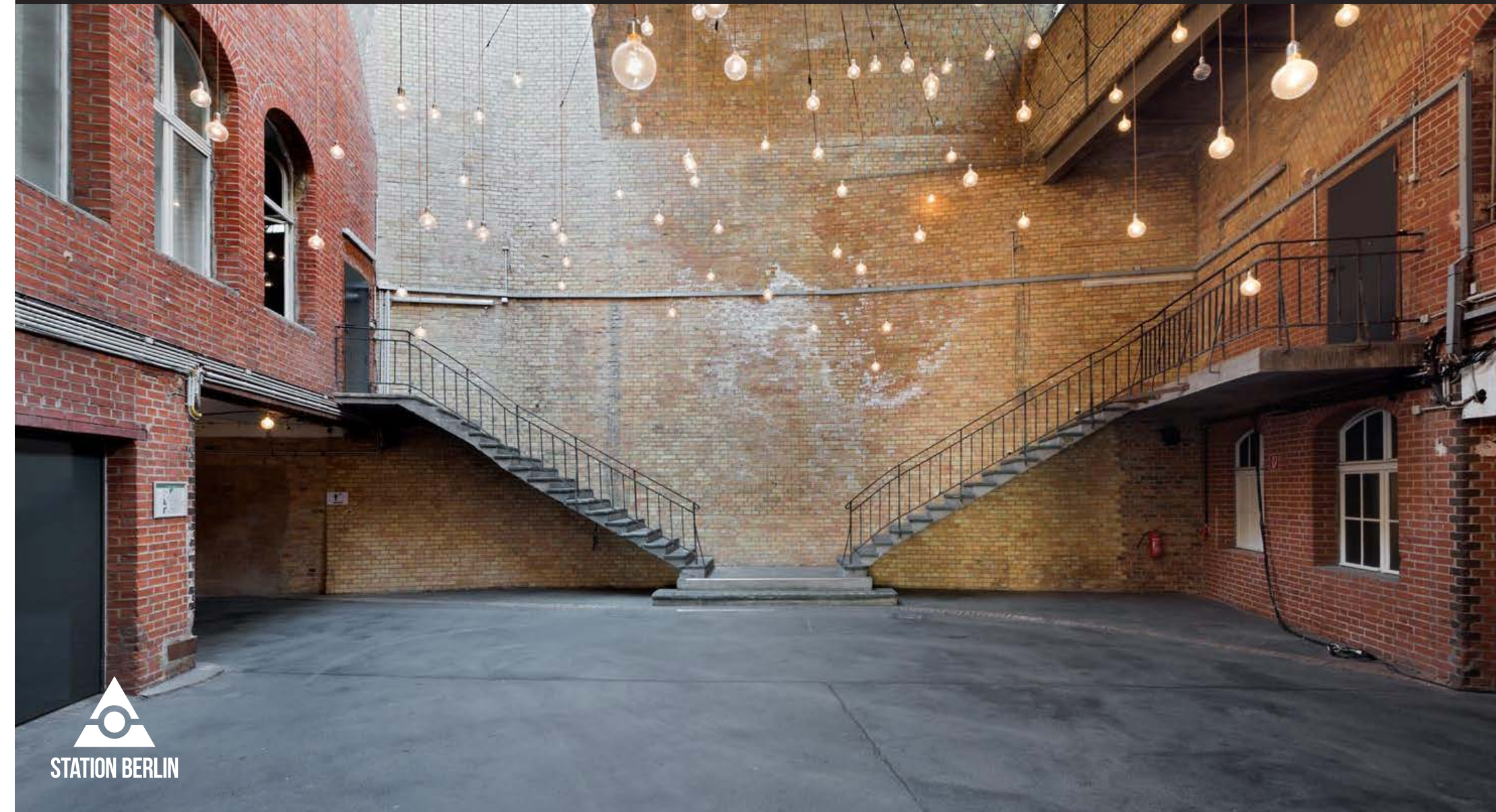


# VIADUCT

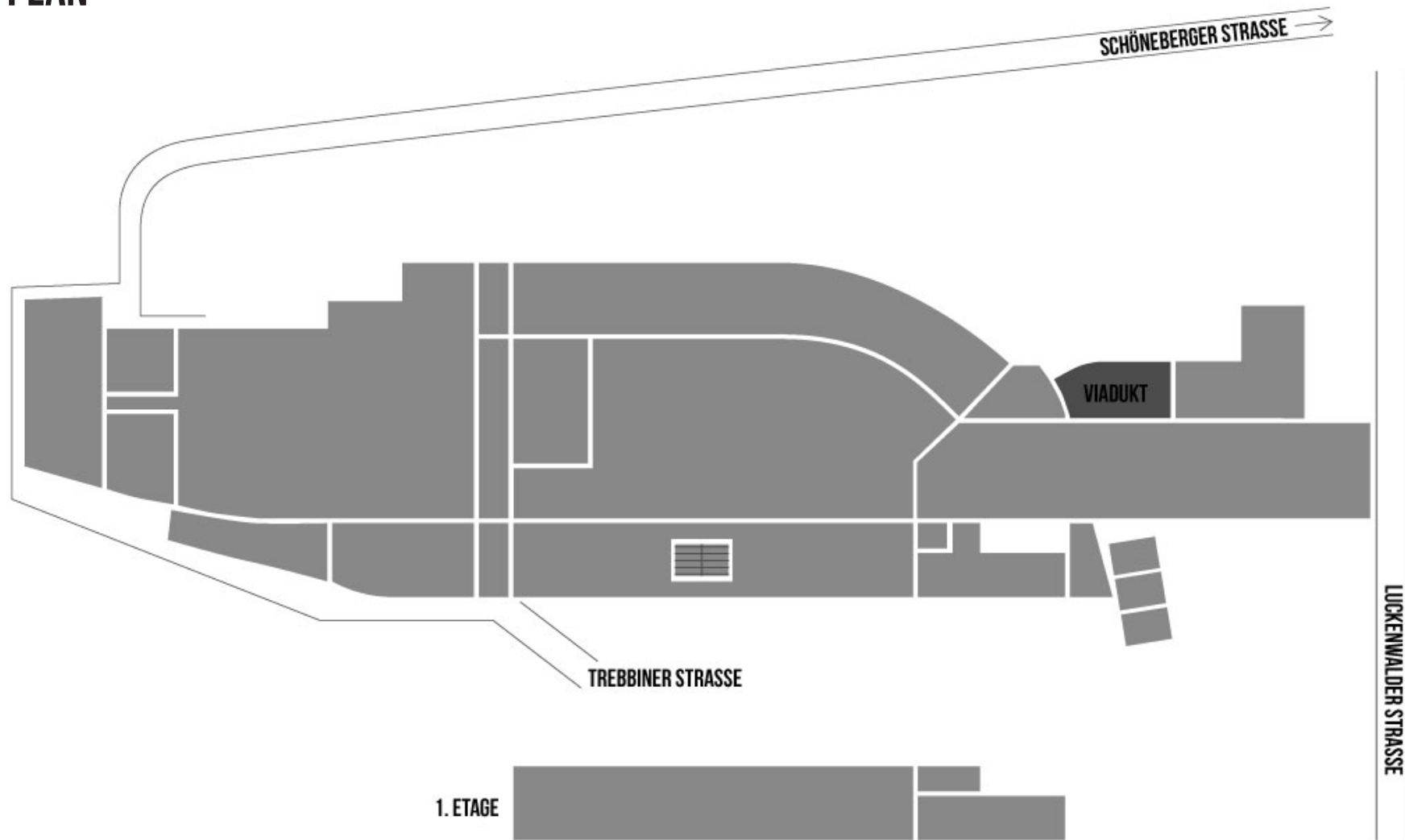
STATION-BERLIN | EIGHT HALLS, 23.000 SQUARE METRES OF SPACE. INFINITE POSSIBILITIES.



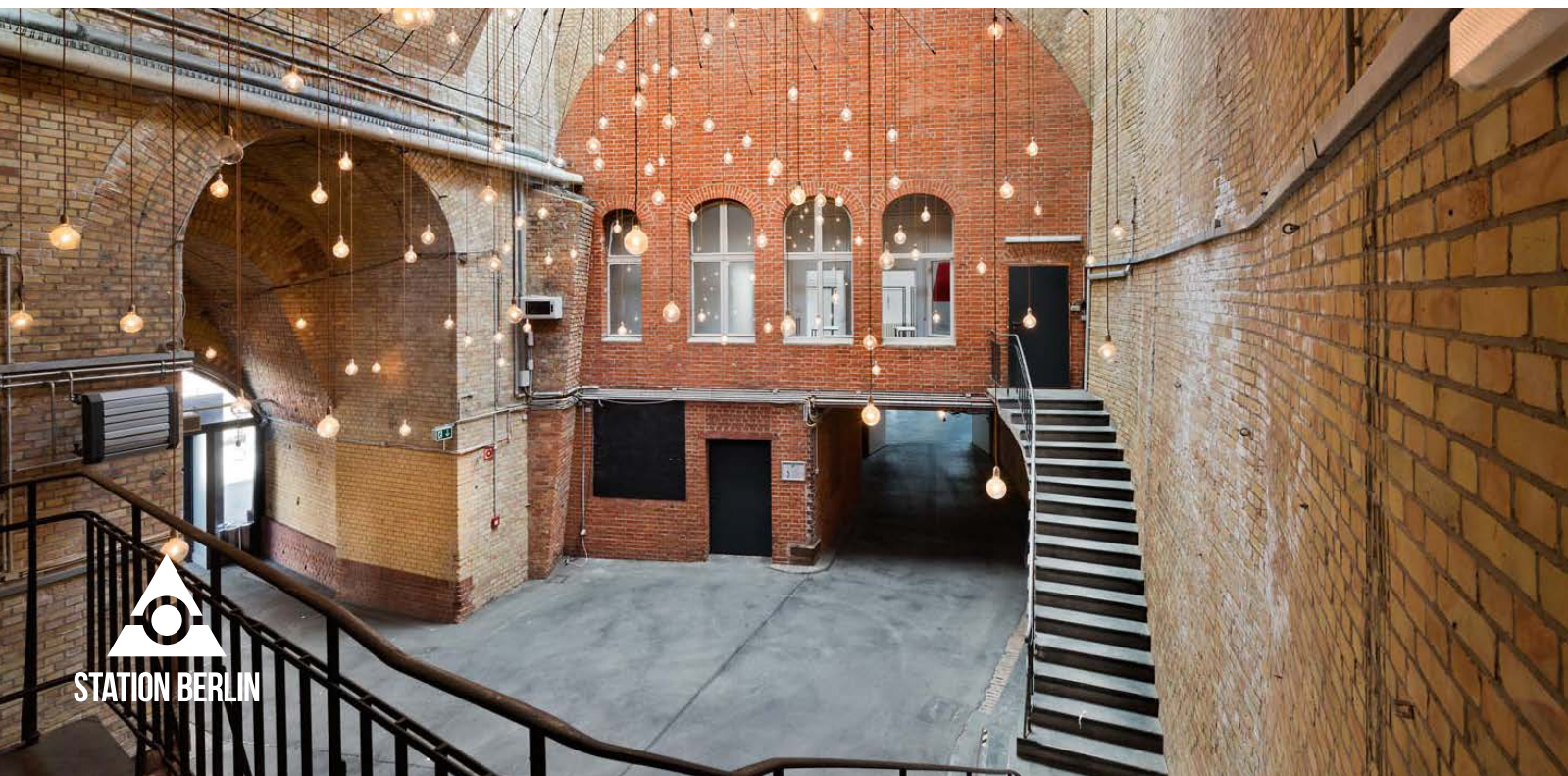
STATION BERLIN

# VIADUCT

## GROUND PLAN





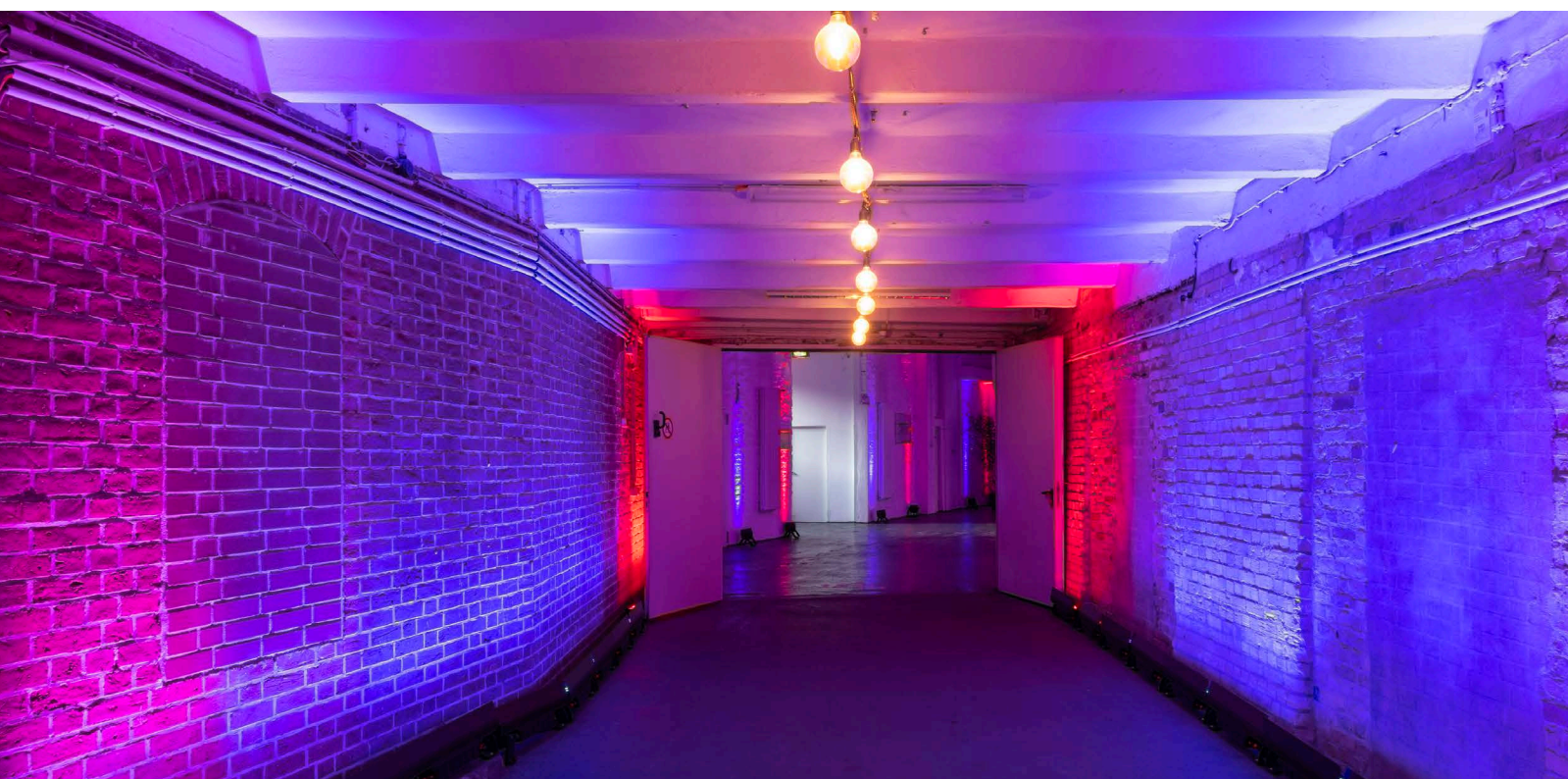


# VIADUCT

## INFO

Exclusive events deserve exclusive spaces. The Viaduct is an impressive foyer for Hall 1 and truly one-of-a-kind. And not just in Berlin.





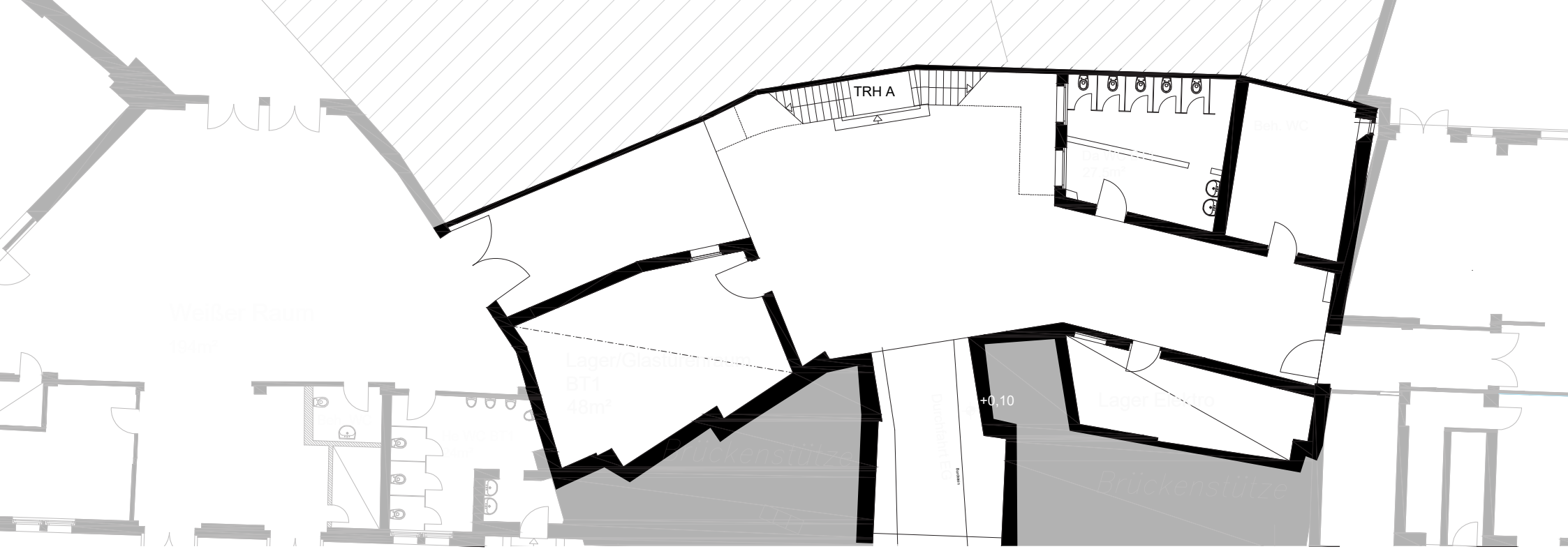
# VIADUCT

## USE

With its clearance height of 11,20m, this structure embodies an industrial architecture of virtually ecclesiastical proportion.

Simultaneously, the walls of historic masonry imbue it with warmth and intimacy.





# VIADUCT

## FACTS

|                  |              |
|------------------|--------------|
| Floor space      | 182 sqm      |
| Clearance height | 11,20 m      |
| Level            | Ground Floor |

## SEATING

|                 |              |
|-----------------|--------------|
| Without seating | 100 Standing |
|-----------------|--------------|

## OTHER

|                             |         |
|-----------------------------|---------|
| Power                       | Yes     |
| Water                       | Yes     |
| LAN/WiFi                    | Yes/Yes |
| Truck/car access (via ramp) | No/Yes  |
| Heating/Cooling             | Yes/No  |
| Blackout                    | No      |