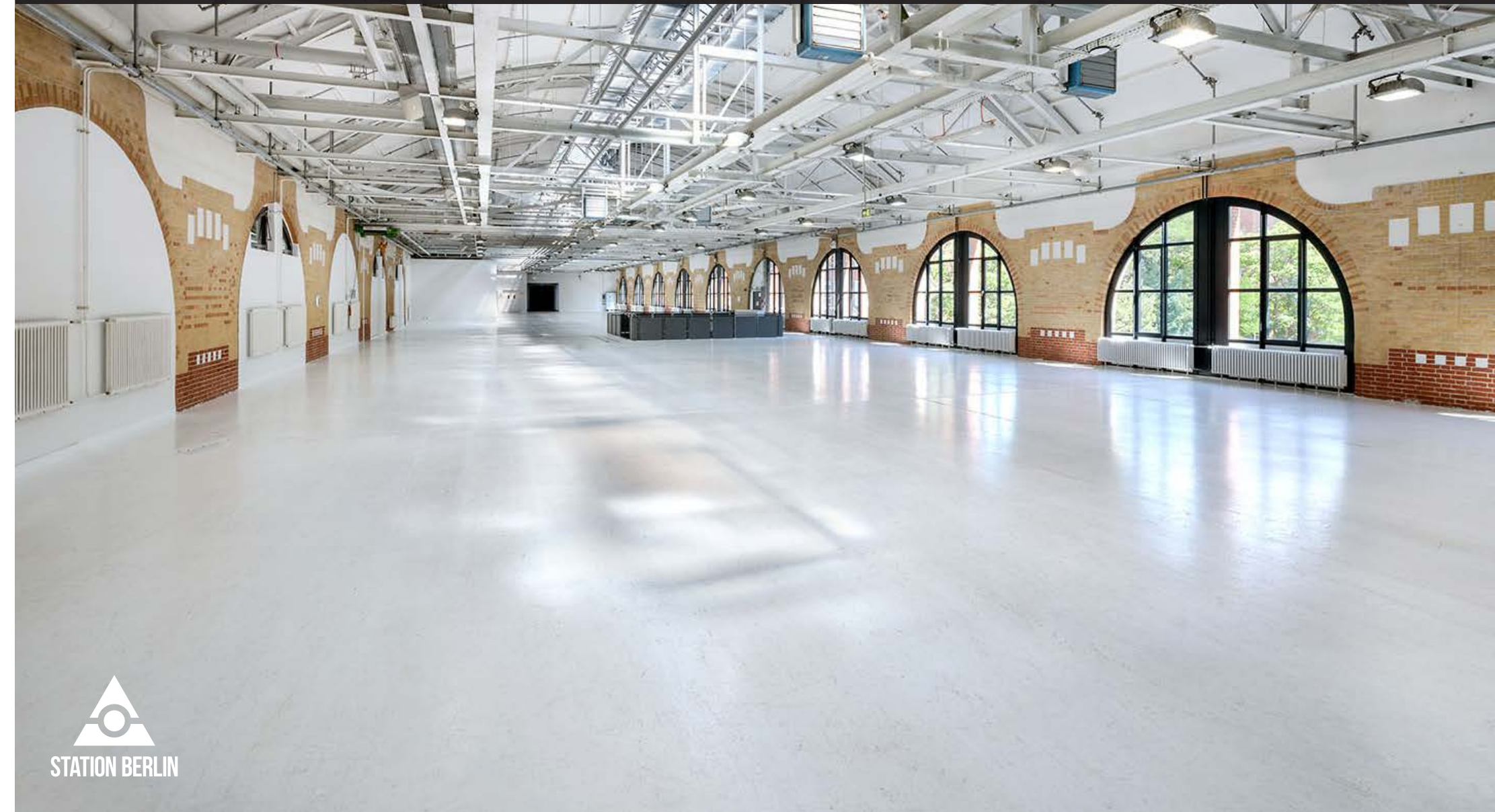


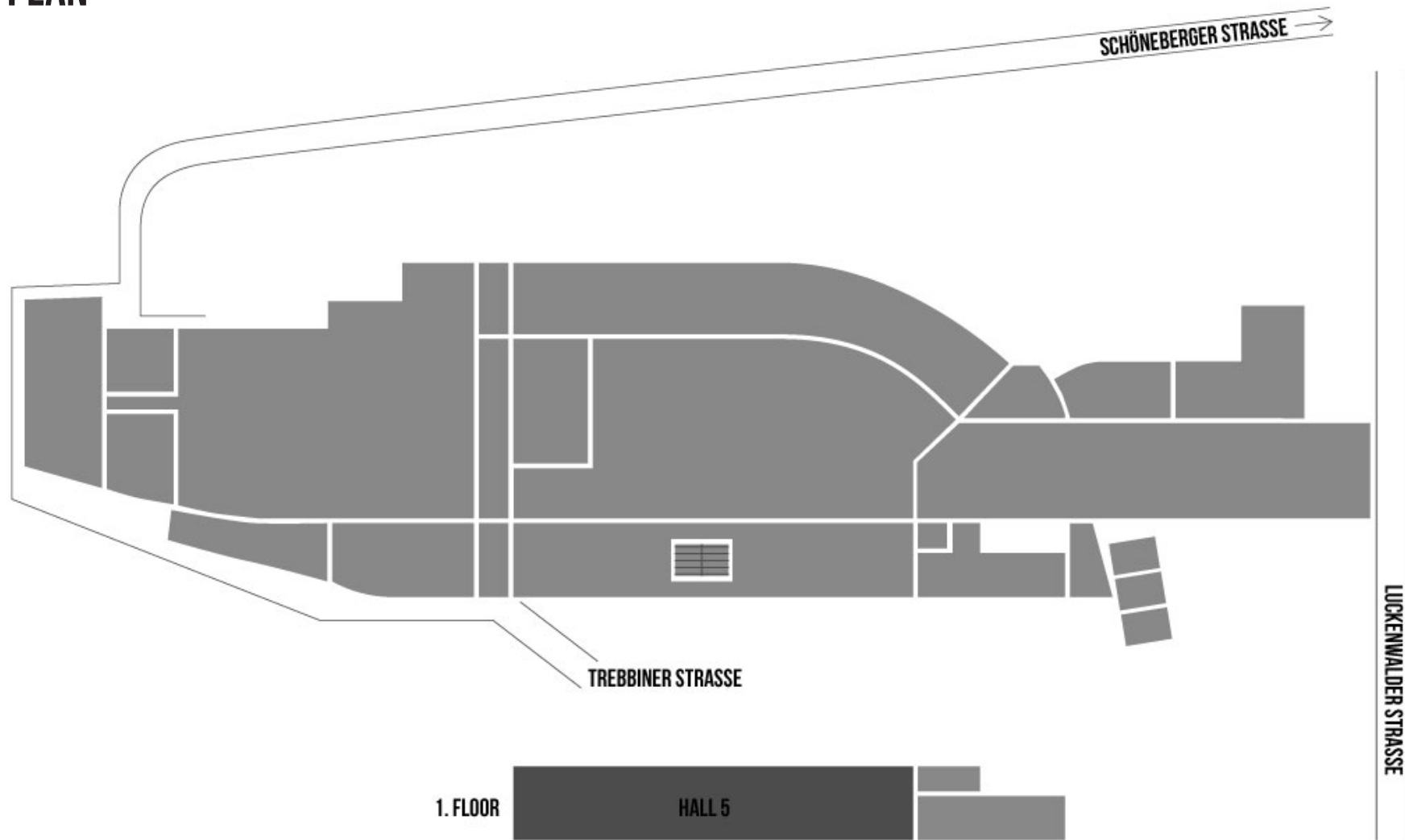
HALL 5

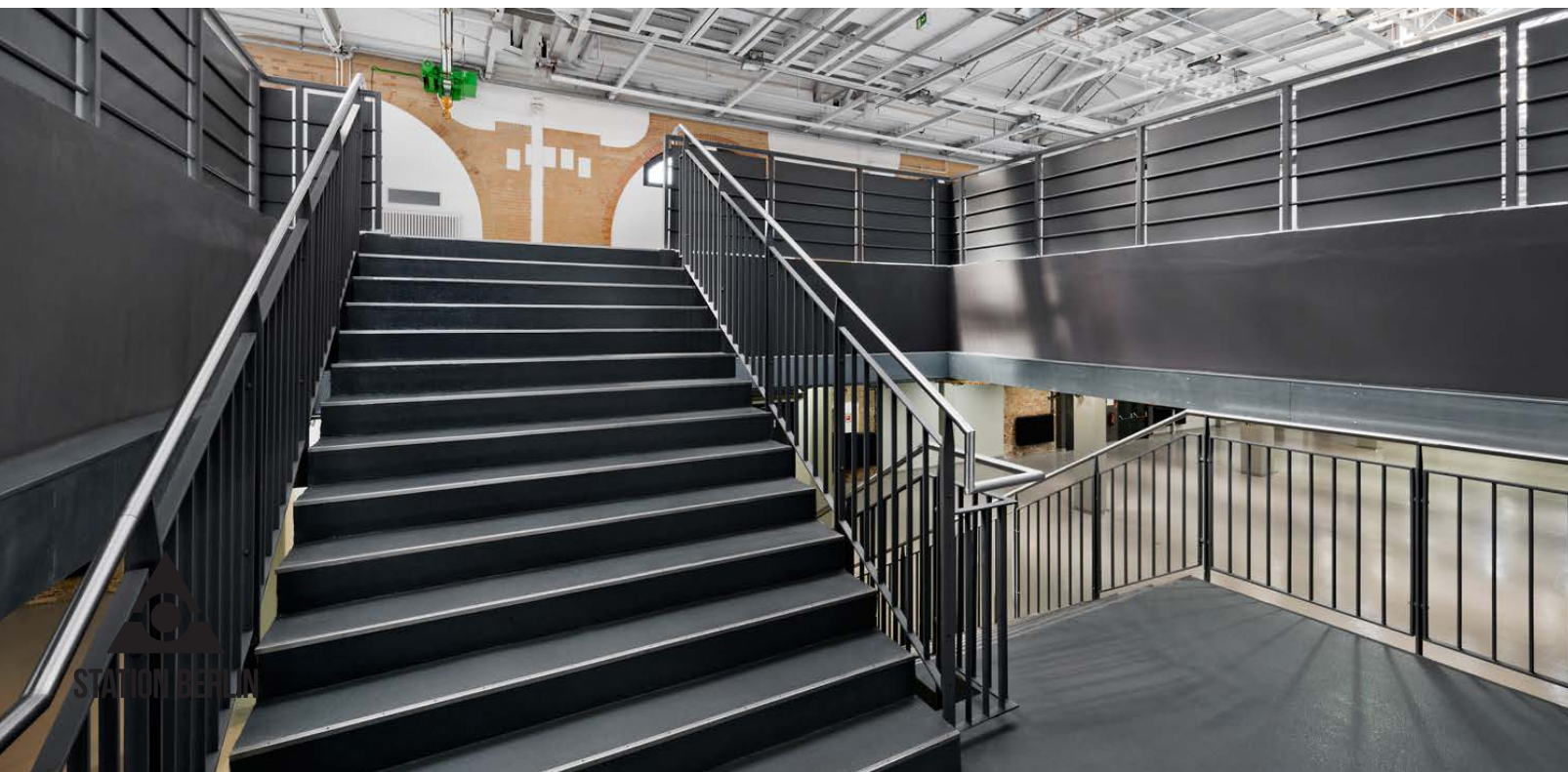
STATION-BERLIN | EIGHT HALLS. 23,000 SQUARE METRES OF SPACE. INFINITE POSSIBILITIES.



HALL 5

GROUND PLAN



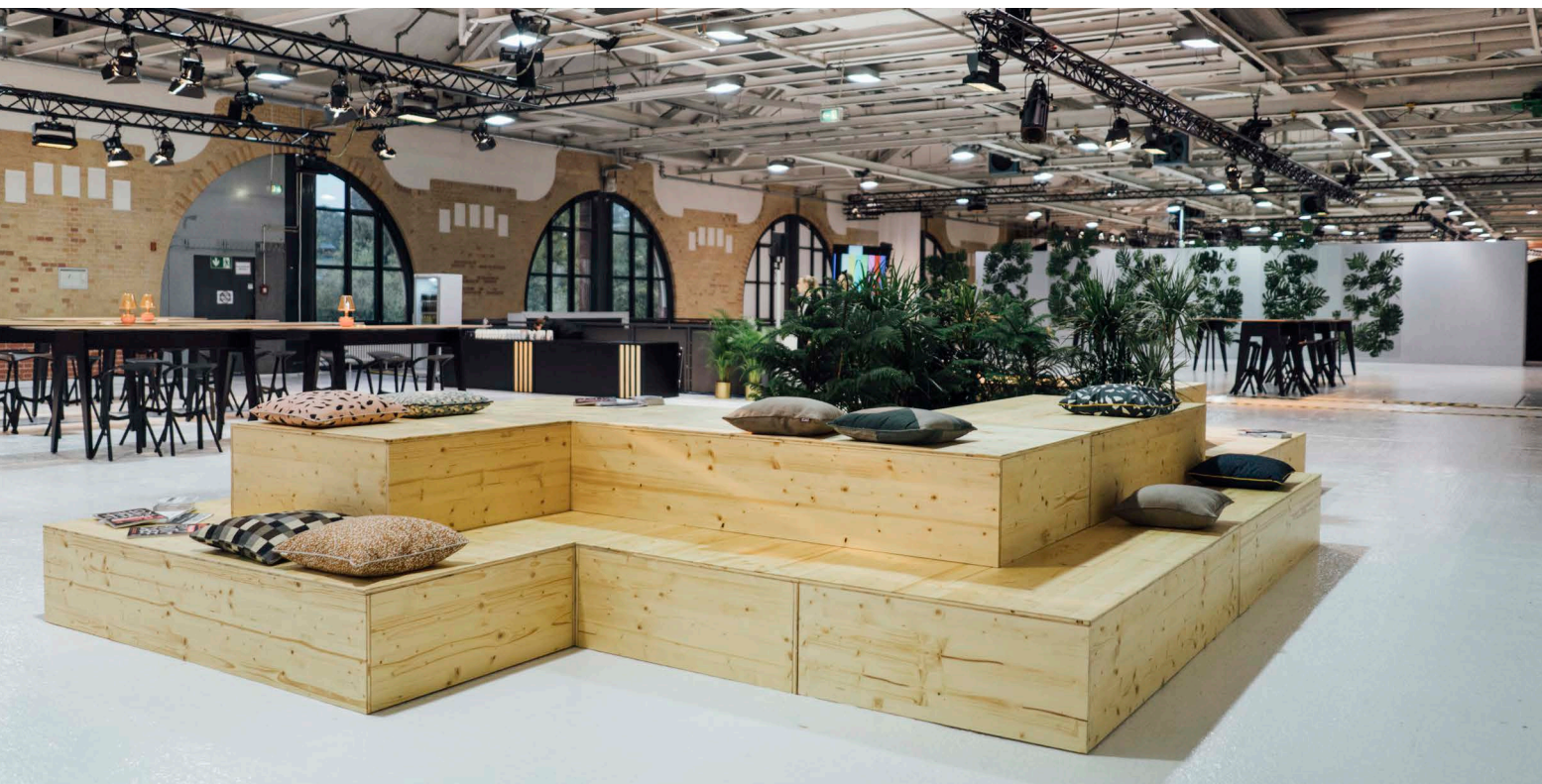


HALL 5

INFO

The 2,000m² in the landmark-protected redbrick Hall 5 is ideally suited for events hosting up to 800 individuals.

Indeed, meetings, conventions, product presentations and gala events take place here on a regular basis.

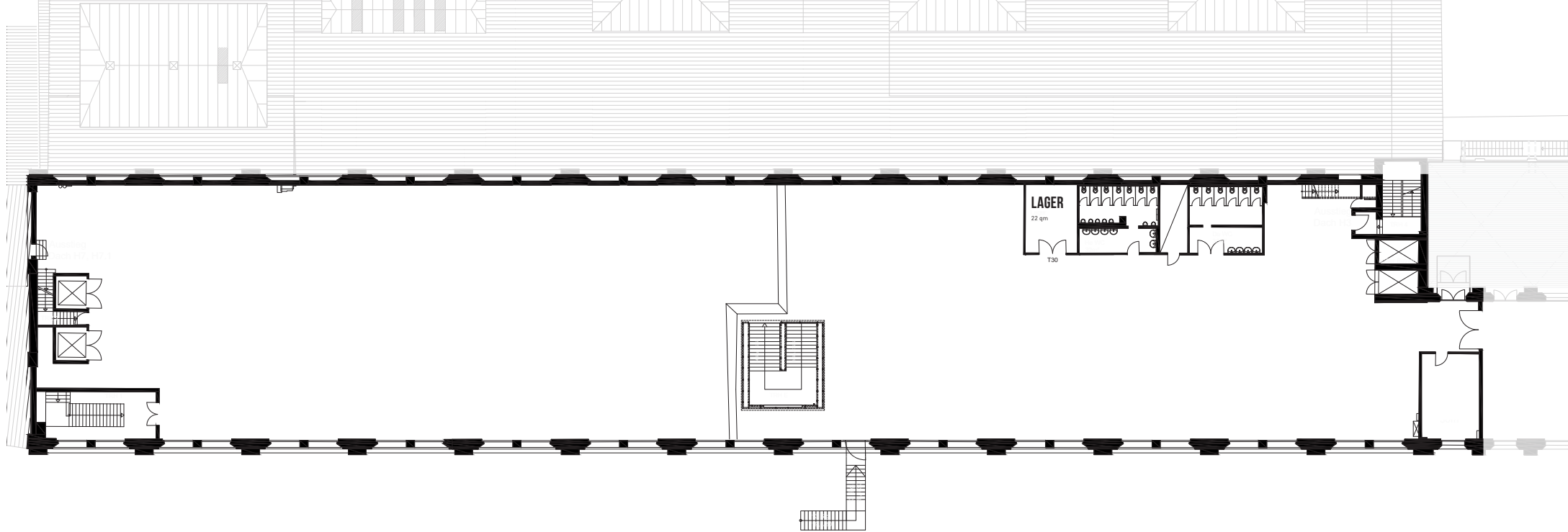


HALL 5

USE

With its 11.20m high vaulted ceilings, Hall 5 conveys a sense of unbridled spaciousness and leaves anyone who enters for the first time, and walks up the broad staircase, awe struck.

Yellow masonry, white plaster and large window surface areas give it an open and elegant appearance. In addition to the stairs, four freight elevators conduct passengers and equipment to the upper floor.



HALL 5

INFO

Floor space	2.000 sqm
Dimensions	105 x 20m
Clearance height	11,20m
Lamp height	4,30m
Main beam height	4,40 m
Level	First Floor

SEATING*

Row	720 Seats
Banquet	800 Seats
Without seating	800 Standing

OTHER

Power	Yes
Water	Yes
LAN/WiFi	Yes/Yes
Truck/car access (via ramp)	No/No
Heating/Cooling	Yes/No
Blackout	Optional

*Reference point. The maximum room capacity depends on the specific room concept and has always be considered individually.